

Moulded Case Circuit Breakers - GH Frame

GH Frame

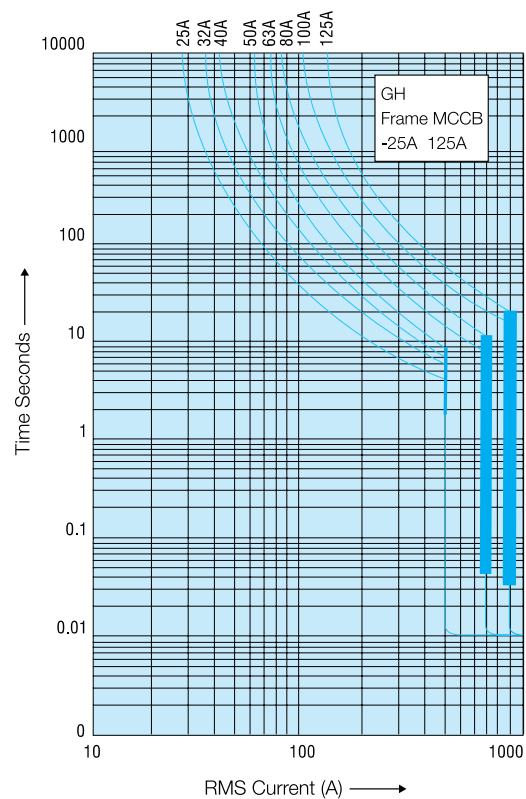
Standard conformity :	IEC 60947-2
Rated operational voltage :	500V AC
Rated Insulation Voltage :	750V AC
Type of release :	Thermomagnetic
Utilisation Category :	A
Rated frequency :	50/60 Hz
Ambient temp :	40oC (50oC on request)
Operating altitude :	2000 meters
Humidity :	0 - 90%
Rated impulse voltage :	8 KV

Cable Capacity

Tunnel Terminals: 70mm²

Frame	GH	
No. of Poles	3P/4PwSN	
Standard current range / rating (I_n)	A	16-160*
Thermal Release Setting	Fixed	
Magnetic release setting for current rating:		
16A - 32A	A	350
40A - 50A	A	500
63A - 80A	A	800
100A - 160A	A	1000
Rated short circuit making capacity (Peak) 1cm at 415V AC		
	KA	52.5
Rated ultimate short circuit breaking capacity (I_{cu}), KA (at different voltages)		
	240V Δ	25
	240V	40
	415V	25
	440V	16
	500V	12
Ics = % Icu		
		50%
Weight		
SP	Kg	0.35
TP	Kg	0.93
4PwSN	Kg	1.2
Terminal capacity (cable)	Sq.mm	70
Bus bar (width)	mm	10
Recommended Torque	Nm	4.2

Time/Current Characteristics



HAVELLS

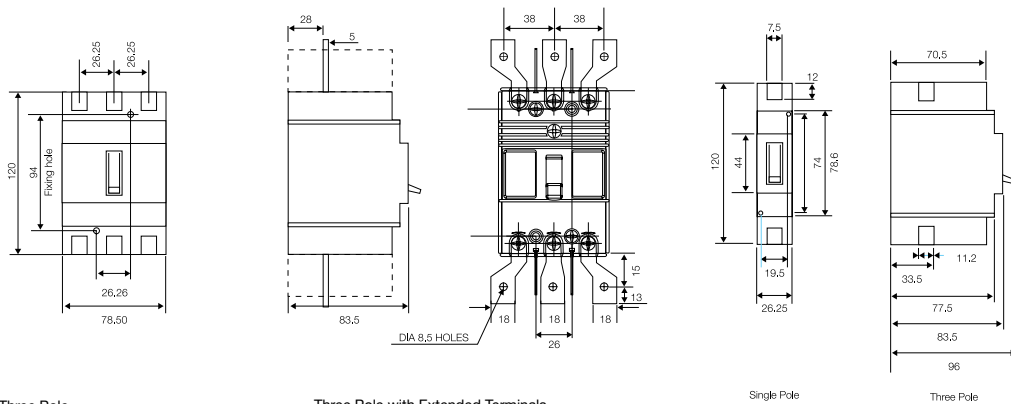
GH Frame MCCB

Tripping Elements	
Overload: Fixed	Instantaneous - Non Adjustable
Rating	SP, TP
(16-32A)	350
(40-50A)	500
(63-80A)	800
(100-160A)	1000

GH Frame Maximum Earth Loop Impedances for Triple Pole MCCBS Zs (Ohms) for Uo = 240 VAC												
Current rating (A)	16	20	25	32	40	50	63	80	100	125	150	160
0.4 Second Tripping Time	0.62Ω	0.62Ω	0.62Ω	0.62Ω	0.27Ω	0.27Ω	0.27Ω	0.27Ω	0.22Ω	0.22Ω	0.22Ω	0.22Ω
5.00 Second Tripping Time	1.5Ω	1.2Ω	0.96Ω	0.75Ω	0.60Ω	0.48Ω	0.38Ω	0.30Ω	0.24Ω	0.19Ω	0.16Ω	0.15Ω

GH Frame Maximum Earth Loop Impedances for Single Pole MCCBS Zs (Ohms) for Uo = 240 VAC												
Current rating (A)	16	20	25	32	40	50	63	80	100	125	150	160
0.4 Second Tripping Time	0.43Ω	0.43Ω	0.43Ω	0.43Ω	0.27Ω	0.27Ω	0.27Ω	0.27Ω	0.17Ω	0.17Ω	0.17Ω	0.17Ω
5.00 Second Tripping Time	1.5Ω	1.2Ω	0.96Ω	0.75Ω	0.60Ω	0.48Ω	0.38Ω	0.30Ω	0.24Ω	0.19Ω	0.16Ω	0.15Ω

Dimensions

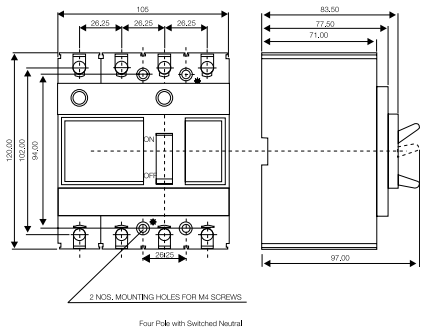


Three Pole

Three Pole with Extended Terminals

Single Pole

Three Pole



Four Pole with Switched Neutral



HAVELLS



Catalogue No'S.

Outgoing devices – MCCBs – Single Pole PSGH range

Description	Rating	Poles	kA	Part No.
MCCB	16A	1	25	PSGH116
MCCB	20A	1	25	PSGH120
MCCB	32A	1	25	PSGH132
MCCB	40A	1	25	PSGH140
MCCB	50A	1	25	PSGH150
MCCB	63A	1	25	PSGH163
MCCB	80A	1	25	PSGH180
MCCB	100A	1	25	PSGH1100
MCCB	125A	1	25	PSGH1125

Outgoing devices - MCCBs - Triple Pole PSGH range

Description	Rating	Poles	kA	Part No.
MCCB	16A	3	25	PSGH316
MCCB	20A	3	25	PSGH320
MCCB	32A	3	25	PSGH332
MCCB	40A	3	25	PSGH340
MCCB	50A	3	25	PSGH350
MCCB	63A	3	25	PSGH363
MCCB	80A	3	25	PSGH380
MCCB	100A	3	25	PSGH3100
MCCB	125A	3	25	PSGH3125
MCCB	160A	3	25	PSGH3160



HAVELLS