



Moulded Case Circuit Breakers - FN Frame

FN Frame

Standard conformity :	IEC 60947-2
Rated operational voltage :	500V AC
Rated Insulation Voltage :	750V AC
Type of release :	Thermomagnetic
Utilisation Category :	A
Rated frequency :	50/60 Hz
Ambient temp :	40oC (55oC on request)
Operating altitude :	2000 meters
Humidity :	0 - 90%
Rated impulse voltage :	8 KV

Cable capacity

Tunnel Terminals: 120mm² with cage clamp or palm width lugs

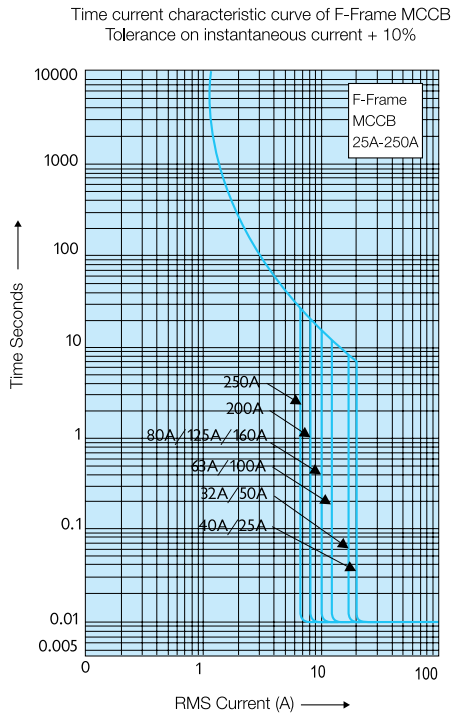
FN-Frame

Frame	FN	
No. of Poles		3P/4PwSN
Standard current ratings (I _n)	A	25-250*
Thermal release setting		Fixed
Magnetic release setting for current rating		Fixed
25A - 32A		500A
40A - 80A		800A
100A - 125A		1250A
160A - 250A		1600A
Rated short circuit making capacity (Peak) 1cm	KA	73.5
Rated ultimate short circuit breaking capacity (I _{cu}), KA (at different voltages)	240V	50
	380V	35
	415V	35
	500V	25
I _{cs} = % I _{cu}		100%
Weight TP (Triple Pole)/FPwSN	Kg	2.9/3.8
Terminal Type		M8
Terminal capacity (cable)	Sq.mm	120
Bus bar (width)	mm	18



HAVELLS

Time/Current Characteristics



FN Frame MCCB

FN Frame Maximum Earth Loop Impedances for Triple Pole MCCBs Z_s (Ohms) for $U_0 = 240$ VAC

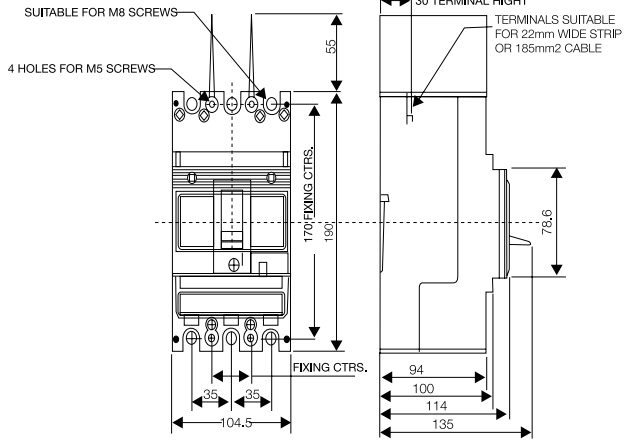
Current rating (A)	25	32	40	50	63	80	100	125	160	200	250
0.4 Second Tripping Time	0.436 Ω	0.436 Ω	0.27 Ω	0.27 Ω	0.27 Ω	0.27 Ω	0.17 Ω	0.17 Ω	0.136 Ω	0.136 Ω	0.136 Ω
5 Second Tripping Time	0.96 Ω	0.75 Ω	0.6 Ω	0.48 Ω	0.38 Ω	0.3 Ω	0.24 Ω	0.192 Ω	0.15 Ω	0.12 Ω	0.096 Ω



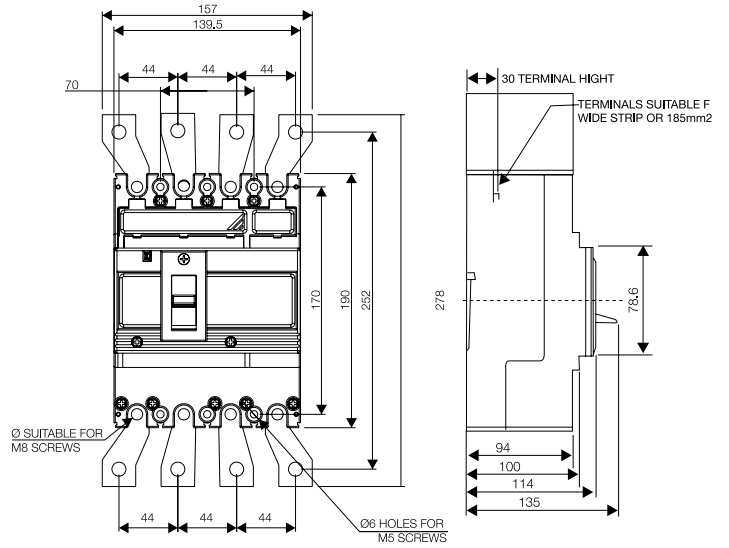
HAVELLS



Three Pole



Four Pole with Switch Neutral



Description	Breaking Capacity kA	No. Ways	Poles	Part No.
Circuit breaker switch	25kA	160A	3	PSFN3160CB
Circuit breaker switch	25kA	200A	3	PSFN3200CB
Circuit breaker switch	25kA	250A	3	PSFN3250CB
MCCB incomer	25kA	160A	3	PSFN3160MC
MCCB incomer	25kA	200A	3	PSFN3200MC
MCCB incomer	25kA	250A	3	PSFN3250MC
MCCB incomer	25kA	160A	4	PSFN4160MC
MCCB incomer	25kA	200A	4	PSFN4200MC
MCCB incomer	25kA	250A	4	PSFN4250MC



HAVELLS